

Martinez Cardona



SUMMIT

CATEGORY
CATEGORIA

5

COMPOSITION
COMPOSICIÓN

100% PL with backing FR

MARTINDALE

80.000

CLEANING
LAVADO



FIRE RESISTANCE
RESISTENCIA AL FUEGO



COLOUR FASTNESS TO LIGHT
RESISTENCIA DEL COLOR A LA LUZ

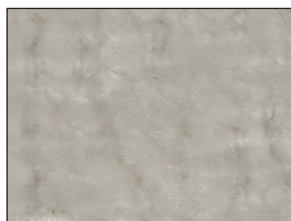
≥ 4/5

PILLING

≥ 4/5

SUMMIT

MC-SUM



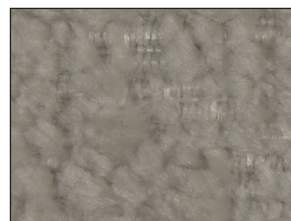
MC-SUM 904



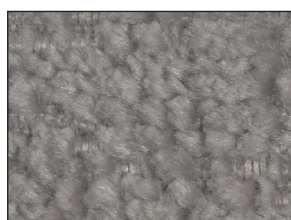
MC-SUM 900



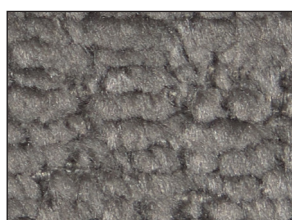
MC-SUM 902



MC-SUM 806



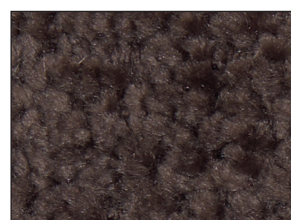
MC-SUM 804



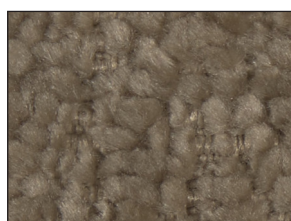
MC-SUM 803



MC-SUM 801



MC-SUM 107



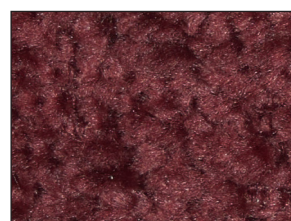
MC-SUM 104



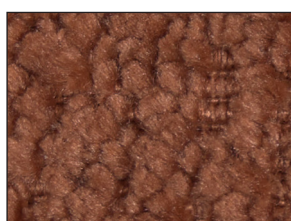
MC-SUM 100



MC-SUM 705



MC-SUM 205



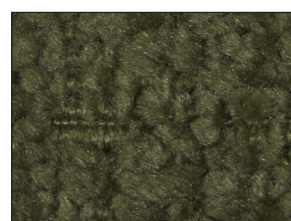
MC-SUM 303



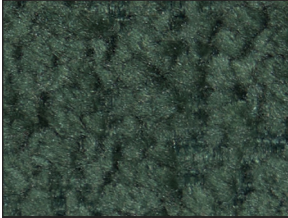
MC-SUM 304



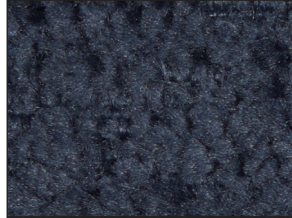
MC-SUM 404



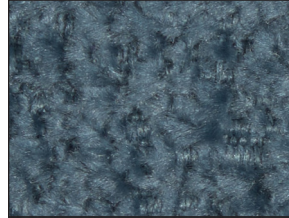
MC-SUM 503



MC-SUM 510



MC-SUM 600



MC-SUM 601



MC-SUM 602



MC-SUM 809



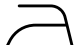










MC-SUM 802

LAUNDRY GUIDE

GUÍA DE LAVANDERÍA

SYMBOLS SÍMBOLOS

	Wash at or below 30°C <i>Lavar a 30°C o por debajo</i>		Do not wash <i>No lavar</i>		Iron <i>Planchar</i>
	Wash at or below 30°C (Machine wash permanent press) <i>Lavar a 30°C o por debajo</i> <i>(Lavado en ciclo para prendas sintéticas)</i>		Do not bleach <i>No usar blanqueador/lejía</i>		Do not iron <i>No planchar</i>
	Wash at or below 30°C (Machine wash gentle cycle) <i>Lavar a 30°C o por debajo</i> <i>(Lavado en ciclo delicado)</i>		Do not tumble dry <i>No secar en secadora</i>		Gentle dry clean, hydrocarbon solvent only <i>Limpiar en seco suave, solo con disolventes a base de hidrocarburos</i>
	Hand wash <i>Lavado a mano</i>				Dry clean with PCE <i>Limpiar en seco con percloroetileno</i>

FIRE BEHAVIOR GUIDE

GUÍA RESISTENCIA AL FUEGO

The **BS 5852-1:1979** (UK) assesses the fire resistance of upholstered materials when exposed to common ignition sources. Two tests are performed: cigarette and match.

La norma **BS 5852-1:1979** (Reino Unido) evalúa la resistencia al fuego de los materiales tapizados cuando se exponen a fuentes de ignición comunes. Se realizan dos pruebas: cigarrillo y cerilla.

The **California Bulletin 117-2013** is a fire safety standard for upholstered furniture. It requires materials to resist ignition from a smoldering cigarette rather than an open flame, reducing the need for flame-retardant chemicals.

El **California Bulletin 117-2013** es una norma de seguridad contra incendios para muebles tapizados. Exige que los materiales resistan la ignición por un cigarrillo encendido en lugar de una llama directa, reduciendo el uso de retardantes de fuego.

CIGARETTE CIGARRILLO



PASS *PASA*



NOT PASS *NO PASA*

MATCH CERILLA



PASS *PASA*



NOT PASS *NO PASA*

CATB 117-2013



PASS *PASA*



NOT PASS *NO PASA*